

## Genesee County Summary\*

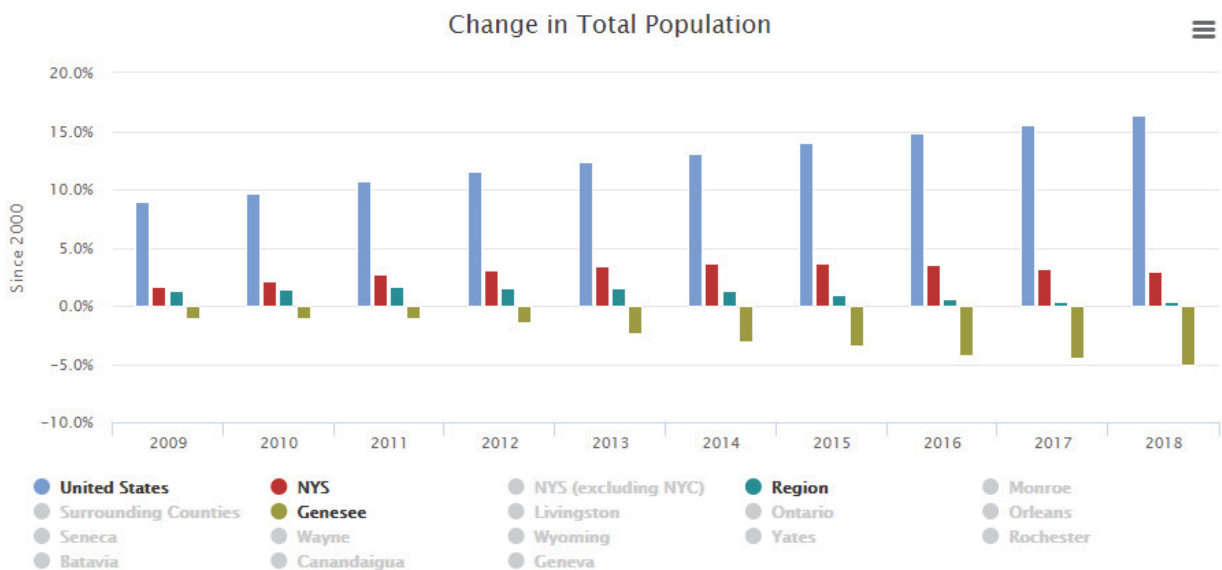
### General Overview

Incorporated in 1805, Genesee County sits on the region’s western border between the cities of Buffalo and Rochester, with Batavia as its county seat and largest municipality. Genesee is one of nine counties in the Greater Rochester Region – Genesee, Livingston, Monroe, Ontario, Orleans, Seneca, Wayne, Wyoming and Yates. Genesee derives its name from the Seneca word Gen-nis’-hee-yo, meaning “the Beautiful Valley.” Genesee’s standout attributes among the region include a low cost of living and a strong tourism industry anchored by Darien Lake Amusement Park, several golf courses, and Batavia Downs racetrack and casino.

Among its strengths, Genesee has relatively high revenue from tourism and strong growth in average salaries. The average salary in the county, adjusted for inflation, increased by 13% since 2000, more than the state or the nation. However, the county has also been losing population and saw increases in poverty: total poverty rate rose by 3 points and the child poverty rate rose by 9 points from 2000 to 2014-18, which was the highest rate of increase in child poverty among the region’s counties.

### Demographic Overview

Genesee County's population fell by 5% between 2000 and 2018, in contrast to an increase of 0.3% for the region, 3% for the state and 16% for the nation. In 2018, Genesee County was home to 57,511 residents, or about 5% of the total regional population.



Source: U.S. Census Bureau

\*Please note, the indicator information included in this summary reflects the data available at the time of its composition. Some indicator data may have since been updated on our website. Visit [actrochester.org/all-indicators](http://actrochester.org/all-indicators) for updates.

Similarly to other counties in the upstate region, Genesee County has an aging population:

- The number of adults 85+ increased 52%, an increase greater than state, national and regional trends.
- Between 2000 and 2014-18, the number of residents younger than 20 years declined 22% and the 20-to-39 range declined 12% - both greater decreases than for the region as a whole.

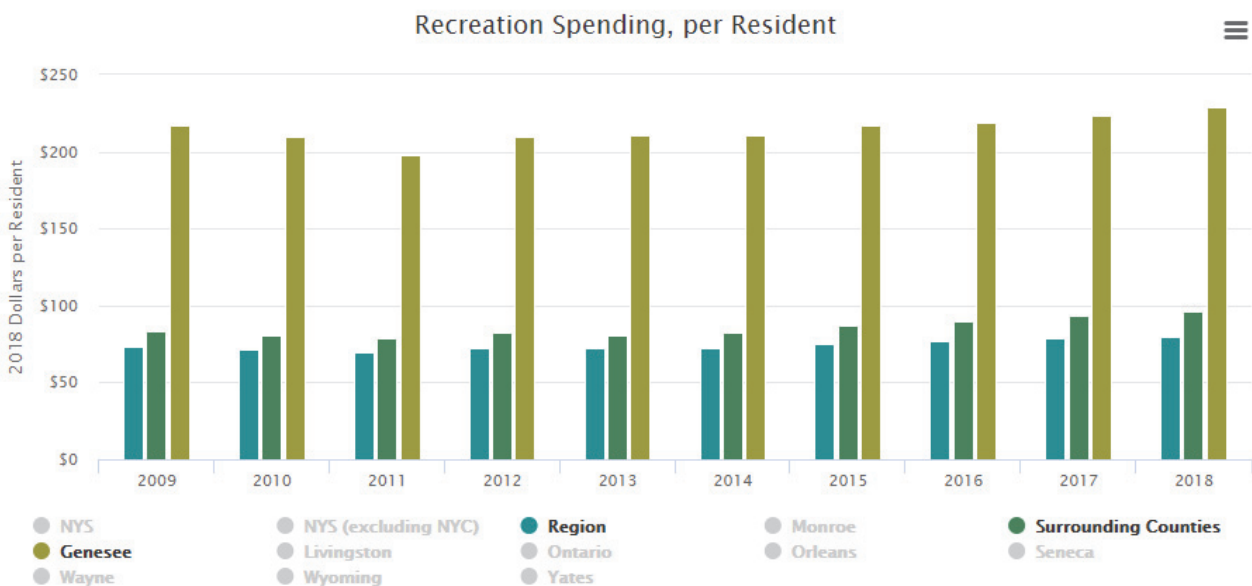
Despite an increase in diversity, Genesee County remains much whiter than the nation, state, and the region.

- Since 2000, the white population in Genesee has fallen by 7%, while the small number of Asians, African Americans, and Hispanics have increased by 97%, 9%, and 155% respectively.
- In 2014-18, 93% of Genesee residents were white, in line with the eight counties surrounding Monroe but much higher than the state (64%) and the nation (72%).

### Community Vitality

Genesee County attracted more tourism spending per capita than all other counties in the region besides Ontario, Seneca and Yates. In 2018, tourism spending amounted to \$1,789 per resident, for a total of roughly \$103 million. Genesee’s rate was higher than the region (\$1,419) but below the state excluding NYC (\$2,259).

Genesee had the highest recreation spending per resident (\$229) in 2018, with a rate almost three times higher than the region (\$80) but still below the state (\$362). Genesee’s recreation spending per resident decreased by 10% from 2005.



Source: NYS Empire State Development

Voter registration declined slightly in 2018 but remains comparatively robust, while election turnout rose from last mid-term election:

- From 2000 to 2018, the proportion of voting-age residents who were registered to vote in Genesee County fell 3 points to 84%.

- In the 2018 midterms, 46% of Genesee adults turned out to vote, above the statewide rate of 26% and on par with the regional rate.
- In the 2016 presidential election, 58% of voting-age residents turned out to vote, the second lowest rate of the past five presidential elections. This rate is similar to the region and slightly above the national turnout rate (55%). However, the county still outperformed the state, which had 50% turnout in 2016.

Genesee County’s rate of registered library borrowers was the highest in the region:

- In 2017, 72% of residents in Genesee’s county library system were registered borrowers, above the state (56%) and region (61%), and every county in the region.
- The number of library visits has decreased 32% since 2000, but the number of visits per resident (6.4) remains higher than the state (5.4) and region (5.9).

Charitable giving modestly increased but continued to lag behind the region, state, and nation:

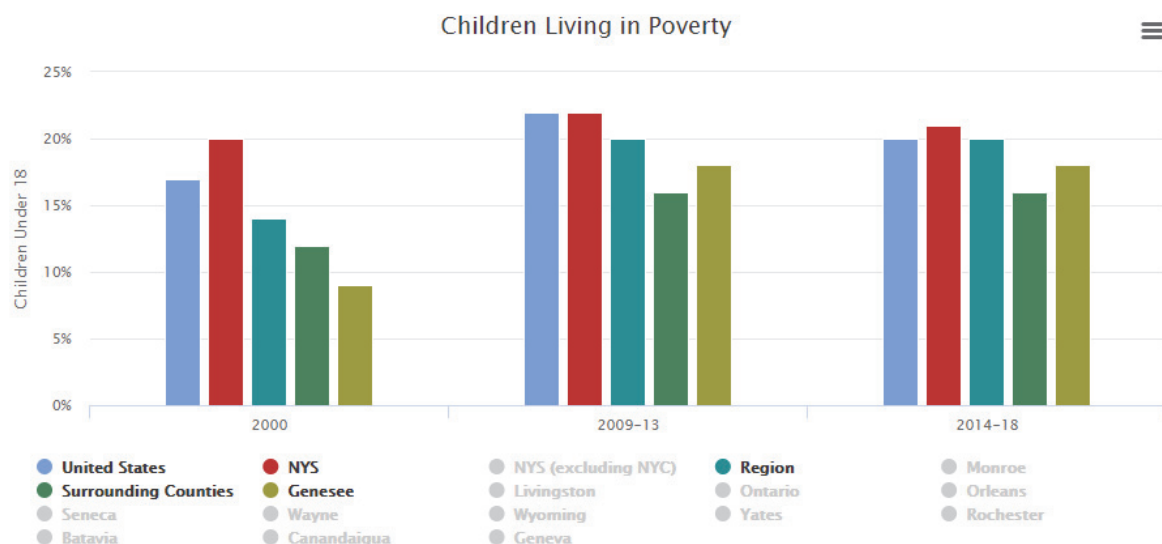
- Genesee’s charitable giving as a share of income was at 1.4% of income in 2017, lagging behind the state (2.5%), nation (2.3%) and region (1.7%), but higher than most regional counties.

For 2014-18, Genesee County saw 8% of its households without a vehicle. The rate has remained consistent since 2000 (7%), and is similar to the nation (9%), the state excluding New York City (10%), and all other counties except Yates and Monroe (13% and 11% respectively).

## Children and Youth

Child poverty continues to be a problem for Genesee:

- In 2014-18, Genesee’s child poverty rate was 18%, up from 9% in 2000. Genesee’s rate was on par with the region and nation (both at 20%) and comparable to the state (21%), but higher than all but two counties in the region (Monroe and Orleans). In contrast, in 2000, Genesee had had the lowest county child poverty rate in the region.
- Genesee’s 9-point increase from 2000 to 2014-18 was bigger than the increases experienced in that period by the state, nation, region, and every county in the region.



In 2014-18, 32% of families with children under 18 in Genesee were headed by one parent only:

- The proportion of families raised by single parents rose by 6 points from 2000 to 2014-18, less than the regional increase of 8 points, but greater than the state's increase of 3 points.
- Genesee's rate of single parenthood in 2014-18 was below the region (39%), state (36%), nation (34%) and all regional counties except Yates.

The proportion of babies with low birth weights has fluctuated in Genesee County over the decade, but remains below state, regional, and national levels:

- The rate of babies with low birth weights was 6.7% in 2017.
- The rate in Genesee has been below the national, state, and regional rates for every year from 2000 to 2017.

Child abuse and neglect has worsened since 2000 and remains a serious issue:

- The rate of indicated cases of child abuse and neglect (cases in which there was credible evidence) in Genesee increased 76% from 2000 to 2018. This is a greater increase than the state (23%) and region (39%).
- The rate in 2018 was 30 per 1,000 children under 18, above the state rate of 17 and the regional rate of 20.

In 2018, Genesee's rate of foster care admissions was 3.1 per 1,000 children under 18, a higher rate than the state (2.0), region (2.3) and all regional counties.

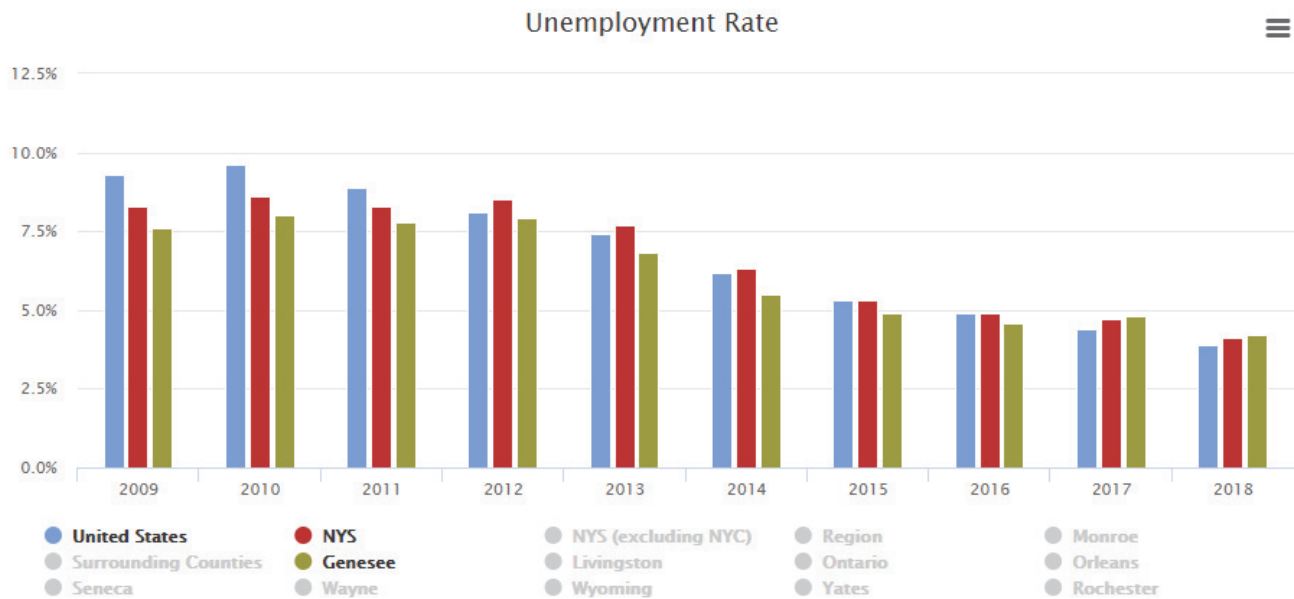
Genesee's rate of teen pregnancy decreased by 3 points from 2000. Its rate in 2017, 2%, was similar to the region and lower than the statewide rate.

Genesee saw 18 live births per 1,000 females age 15 to 19 in 2017, lower than the nation (19), but higher than the state (12) and the region (13).

## Economy

Like the state, region, and nation, Genesee's unemployment soared during the Great Recession of 2008 and its aftermath. However, Genesee's recovery in terms of employment has been stronger than in other areas:

- Unemployment jumped from 4.5% in 2007 to a peak of 8.0% in 2010, but has since maintained a rate of under 5% since 2015 with 4.2% reported for 2018. Genesee's rate is similar to the low of 4.0% in 2000.
- Genesee's rate in 2018 was just slightly higher than that of the nation and the state (3.9% and 4.1% respectively), and on par with the regional rate.



Source: Bureau of Labor Statistics

Genesee's job growth since 2001 has lagged behind the nation and state, but outperformed several counties in the region. Some sectors outperformed others in the county:

- Genesee experienced a 1.2% increase in job growth in the region in 2018.
- In the Manufacturing sector, Genesee's total number of jobs fell less (down 5%) than the nation (down 20%), state (down 34%), and region (down 36%).
- In the Trade, Transportation and Utilities sectors, Genesee saw a higher increase (22%) than the nation, state and the region, ranking second only to Ontario.
- Genesee saw notably less of an increase in the larger sectors than the state, nation and region in the Financial Activities and Leisure and Hospitality sectors.

Genesee's salary growth, adjusted for inflation, has exceeded that of the state, nation and region, but its salary level continues to lag behind some of its peers in the counties surrounding Monroe:

- Salaries in Genesee grew 13% from an average of \$36,355 in 2000 to \$41,201 in 2018.
- This compares to 11% growth nationally and statewide, 3% regionally.
- Besides Yates, Genesee's average salary in 2018 was lower than that of most other regional counties, and was well below the national average of \$57,265 and the state average of \$72,902.

## Education

Genesee County has made progress in prekindergarten participation:

- Genesee’s percentage of 4-year olds in free prekindergarten programs was 62% in 2018 – it was 26% in 2008.
- Genesee’s rate of participation was higher than the state (52%) and the region (45%) in 2018.

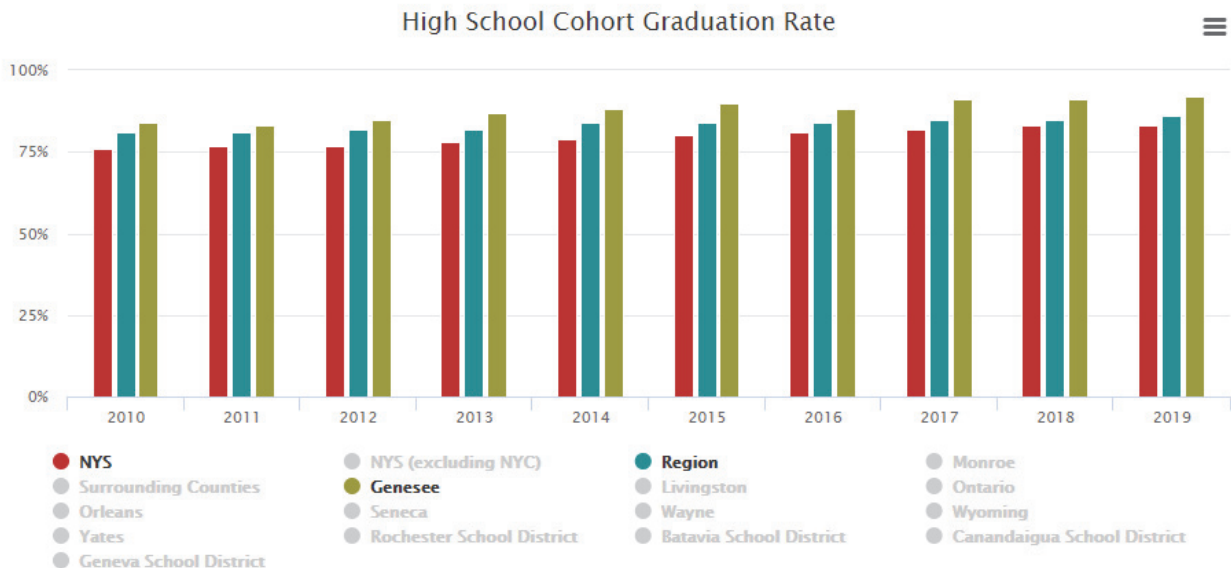
Students in Genesee County showed mixed results on the Common Core-aligned state tests:

- In 2019, 46% of students passed 3rd grade English, and a higher share of students passed 3rd grade math (53%), both rates higher than the region .
- The passing rate for 8th grade English (43%) was above the region but below the state. The 8<sup>th</sup> grade math rate (44%) was lower than both the region and state.
- We note that a substantial number of students did not take state exams in 2019 due to parent concerns about testing in schools. In our region in 2019, 15% of 3rd-8th graders in the region opted not to take the English exam and 16% opted not to take the Math exam.

However, students fared relatively better on the Regents test:

- In 2019, 84% of Genesee students passed the Common Core Algebra 1 Regents, versus 71% for the state and 73% for the region.
- In that same year, Genesee posted an 85% pass rate for the Common Core English Regents, above the region and state (83% and 84% respectively).

Genesee’s four-year high school graduation rate of 92% in 2019 was higher than the state (83%) and region (86%).



Source: New York State Education Department

Compared to other counties, Genesee County has fewer adults age 25 and older that have attended college, but the county is not too far behind the region, state and nation:

- In 2014-18, 55% of Genesee residents had attended at least some college, a rate just slightly below the region (62%), state (60%) and nation (61%).

- A smaller share of adults (8%) had less than a high school diploma, but only 22% of adults had a bachelor's degree or higher – lower than the state (36%), region (33%), and nation (32%).

Overall per-student spending rose by 55% from 2000 to 2018, higher than the region (50%) and the state (61%). In 2018, Genesee districts spent \$22,676 per student, similar to the region but below the state (\$25,845).

Per-student *instructional* spending rose 41% from 2000 to 2018, similar to increase for the region (45%), and the state excluding New York City (46%). In 2018, Genesee spent \$15,567 per student on expenses directly related to its students' classroom experiences.

## **Economic Security**

Genesee has seen its median income drop substantially since 2000:

- From 2000 to 2014-18, Genesee's median income fell 3% to \$59,338, compared to national and regional decreases of 5% and 12% respectively. Within the region, only Seneca had a smaller decrease in their income over that period at 2%.
- Genesee's median income in 2014-18 was below the national and state levels (\$60,293 and \$65,323 respectively), and just above the regional level (\$57,350).

Poverty rates were relatively low, but increased from 2000:

- In 2014-18, the poverty rate in Genesee was 11%, below the state (15%), nation and regional (both 14%) rates.
- However, the rate has increased 3 points from 2000, a greater increase than the state and nation.

The rate of people receiving temporary assistance has remained essentially flat:

- Genesee's rate was 1.0% in 2018, below the state, region, and every county besides Wyoming and Yates.

## **Health**

The rate of people without health insurance is falling:

- In 2018, 5% of Genesee County residents under the age of 65 were uninsured, below the rates for the state (6%) and nation (10%), and on par to the region.
- This is a 7-point decrease from its peak of 12% in 2011 and in-line with rate decreases in the nation, state and region.

The mortality rate, despite falling, has remained relatively high:

- Genesee's mortality rate in 2017 of 761 per 100,000 residents was higher than the state (610) and regional (700) rates.
- The mortality rate is down 8% from 2000; this is less than the statewide and regional decreases of 24% and 14% respectively.

In 2018, 7 cases of gonorrhea per 10,000 residents were reported in Genesee County, lower than the state (19) and region (18 per 10,000 residents). Genesee had the largest increase of all the counties in the region since 2000.

## Housing

Median home values have fallen in Genesee, in contrast to the state and the nation:

- From 2000 to 2014-18, the median home value in Genesee fell 6% to \$117,600. This was a larger decrease than for the region (1%) and is a contrast to the 22% national and 36% statewide increases.
- In 2014-18, the median home value in Genesee was lower than the median for the region (\$135,915), state (\$302,200), and the nation (\$204,900).

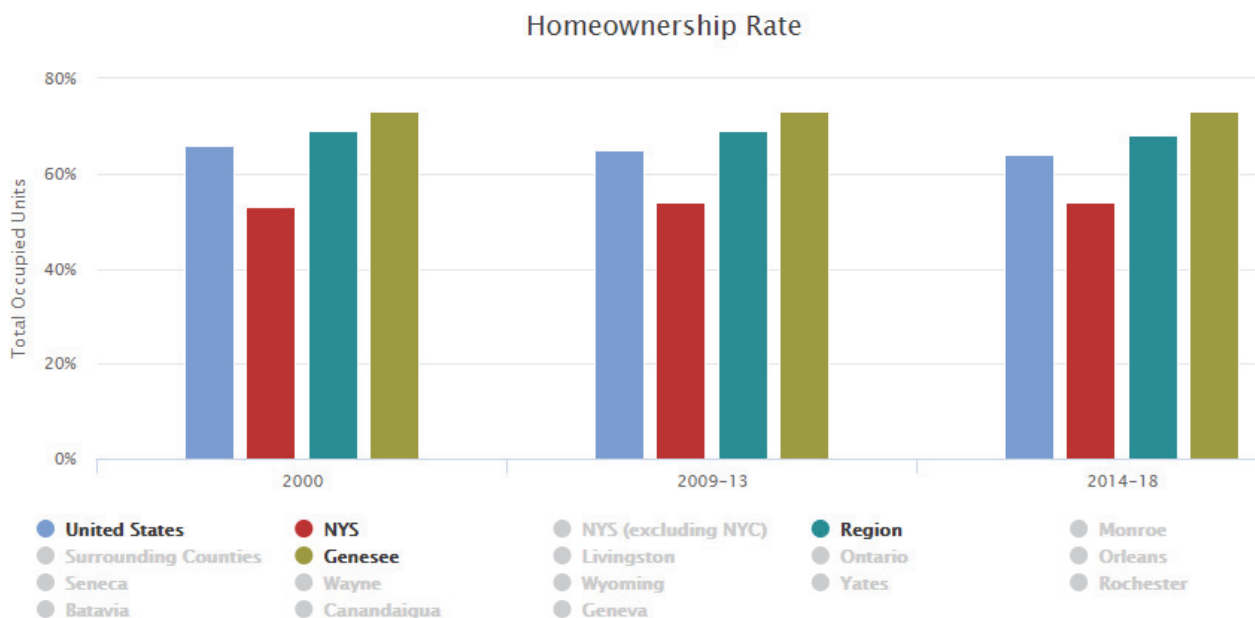
Since 2000, the median rent in Genesee has fallen by 4%, similar to the decrease in the region. Both the nation and the state saw median rent increases of 13% and 22% respectively.

Housing and rent are particularly affordable in Genesee:

- Genesee’s ratio of median home value to median household income, which is a measure of housing affordability, was lower in 2014-18 (2.0) than the region (2.4), state (4.6), and nation (3.4).
- The ratio was unchanged from 2000, as opposed to increases (indicating a decline in affordability) for the region, state, and nation.
- In 2014-18, 29% of median household income went to rent in Genesee, lower than the region (34%), state (36%), and nation (32 %). Genesee’s rate was lower than every county except Wyoming in 2014-18.

More people owned their homes in Genesee than the state, region, and nation:

- In 2014-18, 73% of housing units were owner-occupied, higher than the national rate of 64%, the state rate of 54%, and the regional rate of 68%. Genesee’s rate did not change from 2000; in contrast, the rate fell slightly regionally and nationally.



Source: U.S. Census Bureau

Genesee County had the lowest rate of vacant housing units (8%) on par with Monroe County in 2014-18. Though Genesee’s vacancy rate has risen 2 points since 2000, this increase lower than that of the nation and state (3 and 4 points respectively).



## Public Safety

Genesee's rate of serious crime is below the state and region:

- Genesee's rate at 164 per 10,000 residents in 2018 was below the state (178), nation (257) and region (190).
- Genesee's rate fell by 39% since 2000; a smaller decrease than in the region (46%), state (42%), and similar to the national decline over that same period.

Genesee's rate of violent crime – 22 per 10,000 residents – has risen notably since 2000, in contrast to decreases in the state and nation.

- The rate of violent crime in Genesee was lower than the state and the nation (35 and 37 per 10,000 residents respectively) and slightly lower than the region (24) in 2018.
- However, violent crime has increased 60% since 2000, versus an 8% rise in the region, and a drop in both the state (37%) and nation (27%) over that period.

The number of victims of domestic violence per 10,000 residents nearly doubled from 2009 to 2018 – compared to the 10% drop for the state (excluding NYC) and the 3% drop for the region.

Genesee's arrest rate for 2018 was approximately 216 per 10,000 residents, above the state (209) and region (188). Arrests have declined 6% since 2000, a smaller decline than the state and region.

Incarcerations in Genesee County rose 44% since 2008, an increase ranked third highest in the region after Seneca (48%), and Livingston (47%). In 2018, there were 18 arrests per 10,000 residents in Genesee, higher than the state (12) and the region (13).

*To learn more about our cities, counties and region, visit <https://actrochester.org/>.*